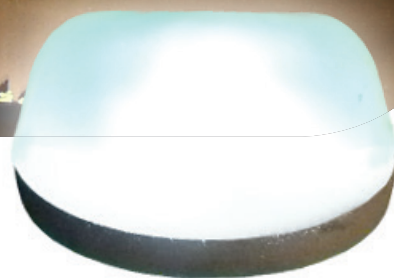




SIGNALIGHT



SIGNALIGHT is a versatile product for **optimal safety marking of danger zones** (roundabouts, dangerous bends, left turns, covered roadways and tunnels). This **omnidirectional** wired stud easily adapts to **installation on concrete edges and metal or wooden runners**. Using High Power LED technology, SIGNALIGHT is a great alternative to traditional lighting. SIGNALIGHT is simple to install thanks to its “vampire connector” technology that requires no junction box, special tool or particular skill.

■ APPLICATIONS



Roundabouts



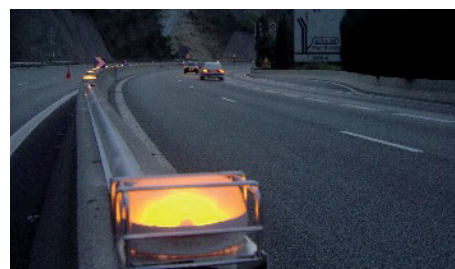
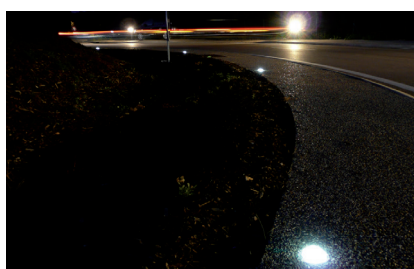
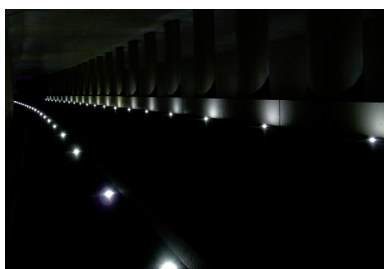
Islands



Motorways



Dangerous bends



■ DETAILS

- LED stud with flash or continuous mode
- Affixed after core drilling
- **Electronically-enclosed and perfectly waterproof (IP68)**
- Wired using a unique vampire connector system, meaning no special tool is required for connection
- Recommended spacing:
 - 6m on motorway interchange
 - 3m on roundabout
 - 10m on dangerous bends

■ ADVANTAGES

- 360° effective light
- Offers effective safety in the event of an urban lighting outage
- Runs on centralised solar power (2 x 20 Wp) when in synchronised flash mode
- High Power LED advantages: long life and energy-saving (e.g. Nine 1 watt 100 lumen High Power LEDs produce the same light intensity as one 50 watt halogen bulb)



■ TECHNICAL INFO

Mechanical

MATERIAL	Tempered glass
DIMENSIONS	Diameter: 104mm / Height: 50mm
WEIGHT	910g
PROTRUSION ABOVE ROAD	20mm
MOUNTING	Embedding in a core drilled hole 112mm wide and 20mm deep (sealed with a bi-component cold resin)

Optical

OPTICAL PRINCIPLE	1 LUXEON Rebel (100 lumen) High Power LED
OPTICAL EFFICIENCY	Effective at over 800m
COLOURS	White (other colours upon request)

Quality

COMPRESSION RESISTANCE	> 16 metric tons
IMPACT RESISTANCE	> 20 Joules
WATERPROOFNESS	Electronic module and stud: IP68 - connector: IP67
WARRANTY	2 years under normal conditions of installation and use

Electricity

VOLTAGE/CURRENT	12-24 volts / 1 watt
CONNECTOR/CABLE	Rapid vampire-type connector on tape cable