



# LUMICONE



LUMICONE is ideal for **marking out areas occupied by people working at night** (work sites, accident zones or police checkpoints). The cone/LUMICONE combination functions as one body and means that habits of use need not be changed: **LUMICONEs stack and unstack as usual, with no extra parts required.**

The LUMICONE module is forcefully inserted in the head of a K5a-type traffic cone. Once installed, **this light module automatically turns on in flash mode at night, lighting the entire traffic cone.** This makes the cone visible from several hundreds of metres away.

## ■ APPLICATIONS



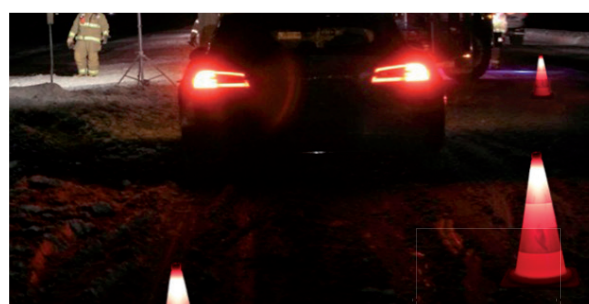
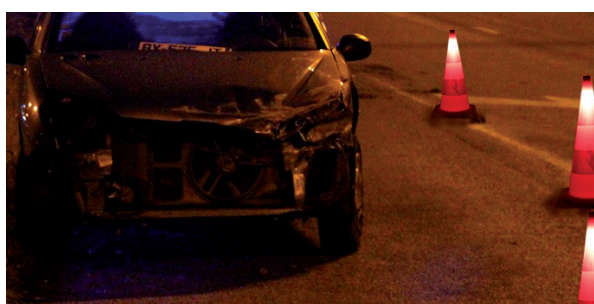
Road worker safety



Marking out accidents



Police operations



## ■ DETAILS

### • MECHANICAL

LUMICONE has a zamak body with anti-rust coating and 3 attachment feet with harpoons that hook into the cone tip when the module is inserted.

**Some 13,500 charge/discharge cycles were carried out to check the LUMICONE's solidity of installation and impact resistance.**

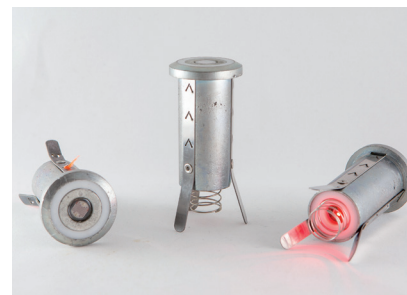
The cone volume remains the same with the LUMICONE module installed, and stacks in the same manner.

### • OPTICAL

LUMICONE features a light sensing unit that triggers it at night.

The LUMICONE base includes High Power red LEDs that flash at night.

LUMICONE also features a set of accumulators that provide around **100 hours of operation between two charge cycles.**



### • ELECTRICAL

It is easy to recharge the LUMICONE, **thanks to its innovative, patented design:** once the cones are stacked, simply place the charger head on the top of the last cone and connect it to

the vehicle's 12 or 24V DC power supply.

If the vehicle remains stationary for a prolonged period, the LUMICONES will not activate but

will retain their charge ready for the next use.

## ■ TECHNICAL INFO

### Mechanical

MATERIAL	Anti-rust coated zamak and Technil
DIMENSIONS	Overall diameter: 47mm - Length: 100mm
WEIGHT	275g
MOUNTING	Forceful insertion in the cone head and self-locking

### Optical

OPTICAL PRINCIPLE	High Power red LED
OPTICAL EFFICIENCY	Visible from over 400m
LIGHT MODE	One 30ms flash per second

### Electricity

BATTERIES	NiCd 2,400 mAh
LED ACTIVATION SYSTEM	Light sensor unit triggers activation at night only
BATTERY RECHARGE SYSTEM	By charging head plugged into mains power or 12V DC, using automatic electrical conduction between stacked cones.

### Quality

IP	IP65
WARRANTY	1 year under normal conditions of installation and use



SAFETY

CRYZAL

**CRYZAL**

The warranty is valid for 1 year. The warranty is activated if the lighting system stops working under normal conditions of use. In that situation, the part must be returned to our workshops (postage paid). Mechanical damage is not covered. The customer is responsible for being aware of the use recommendations and instructions, and ensuring these products are correctly used by qualified staff.