

DeepBlue^{v2t} Sensor



S-model

Travel time, O/D matrices, incident detection, Online web based applications

Bluetooth, Wi-Fi, GPS, 3G, Dual-SIM, Ethernet, Multi-color LED, GPIO, RTC Battery, Non-volatile memory

Field proven, easy set-up and configuration, multi-lane, side-fire, Wireless device detection, tracking

Cost effective, Low power, Self-diagnostics, Autonomous, Reliable and secure transmission

ALL-IN-ONE
INTERNAL | BLUETOOTH &
ANTENNAS | V2t-PLATFORM

With our dedication to continuous development the specifications are subject to change. To verify the current information please visit www.deepbluesensor.com

Passionately designed by

trafficnow[®]

DeepBlue

Sensor



POWER SUPPLY

12 to 48 VDC

Min 1.93 W (configuration dependent)

PoE (Power over Ethernet)

CPU & MEMORY

ARM 9 Processor

128 MB RAM / Flash

Micro SD storage

COMMUNICATIONS

Ethernet

Optional 3G/CDMA Worldwide

Dual SIM-Card slot

Remote Sensor Access

Optional General Purpose IO

OPERATIONS

Linux based OS

LED for operations diagnostics

ENVIRONMENTAL

-35°C to +80°C

IP65 housing

Shock/vibration: NEMA TS2-2003

DIMENSIONS & WEIGHT

H x W x L 200 mm x 148 mm x 62 mm

0.66 kg (1,035 kg including stainless steel brackets)

BLUETOOTH

internal antenna

65° angle

Detects all standard Bluetooth® versions

-102dB receive sensitivity

WI-FI

Optional Wi-Fi detection

Real Time Segment data

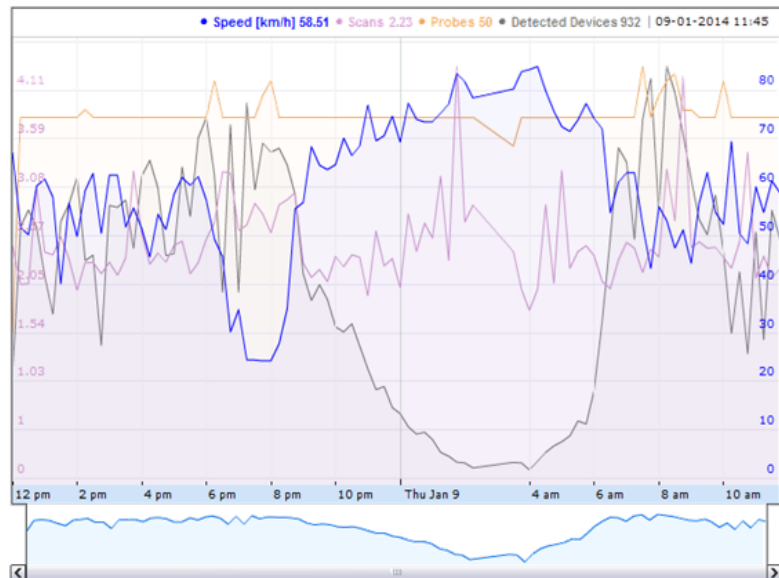
Click on a segment in order to display its information

Segment:	[8] Av. Nardisa de Jesús Sector Sauces->Puente Unidad Nacional (Puntilla-Guill)
Segment length:	6200 m
Heavy traffic if speed is below:	30.00 km/h
Free-flowing traffic if speed is above:	40.00 km/h
Average speed in segment:	49.29 km/h
Average travel time:	0 h 7 m 33 s
Sample Size:	10
Detected Devices:	146
Time interval:	2014-01-09 11:54:00

Most recent Historic values

Show OD Matrix

Show History



S-model



REGULATORY

RoHS Compliant

CE, FCC certified

With our dedication to continuous development the specifications are subject to change. To verify the current information please visit www.deepbluesensor.com

Passionately designed by

trafficnow®