

# DeepBlue<sup>v2t</sup> Sensor



R-model

*Travel time, O/D matrices, incident detection, Online web based applications, DIN-rail mounted*

*Bluetooth, Wi-Fi, GPS, 3G, Dual-SIM, Ethernet, Multi-color LED, GPIO, RTC Battery, Non-volatile memory*

*Field proven, easy set-up and configuration, multi-lane, side-fire, Wireless device detection, tracking*

*Cost effective, Low power, Self-diagnostics, Autonomous, Reliable and secure transmission*

RAIL | BLUETOOTH &  
VERSION | V2t-PLATFORM

With our dedication to continuous development the specifications are subject to change. To verify the current information please visit [www.deepbluesensor.com](http://www.deepbluesensor.com)

Passionately designed by

**trafficnow®**

# DeepBlue

## Sensor



### POWER SUPPLY

12 to 48 VDC

Min 1.93 W (configuration dependent)

### CPU & MEMORY

ARM 9 Processor

128 MB RAM / Flash

Micro SD storage

### COMMUNICATIONS

Ethernet

Optional 3G/CDMA Worldwide

Remote Sensor Access

Optional General Purpose IO

### OPERATIONS

Linux based OS

LED for operations diagnostics

### ENVIRONMENTAL

-35°C to +80°C

For DIN-rail mount

Shock/vibration: NEMA TS2-2003

### DIMENSIONS & WEIGHT

H x W x L 124 mm x 50 mm x 174 mm

0.60 kg

### BLUETOOTH

Single or Dual channel operation

Detects all standard Bluetooth® versions

More than 500 meters range

Up to -104dB receive sensitivity

### WI-FI

Optional Wi-Fi detection

#### Real Time Segment data

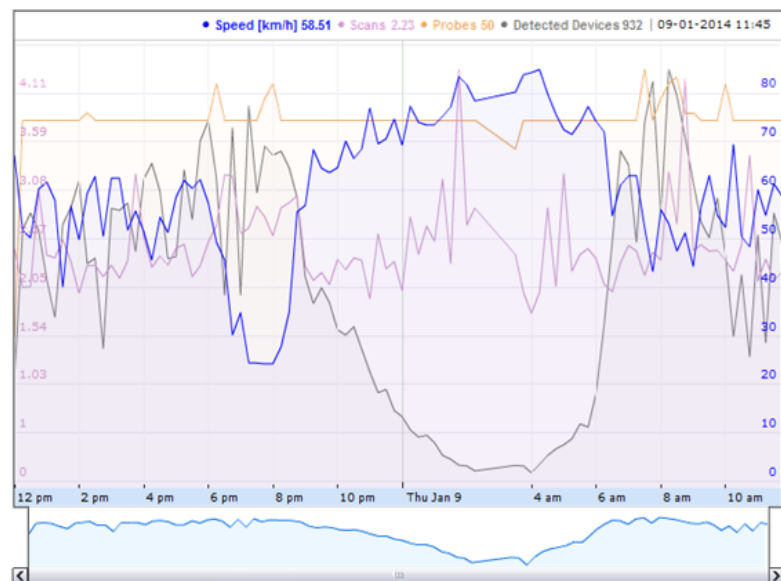
Click on a segment in order to display its information

Segment:	[8] Av. Narciso de Jesús Sector Sauces->Puente Unidad Nacional (Puntilla-Guill)
Segment length:	6200 m
Heavy traffic if speed is below:	30.00 km/h
Free-flowing traffic if speed is above:	40.00 km/h
Average speed in segment:	49.29 km/h
Average travel time:	0 h 7 m 33 s
Sample Size:	10
Detected Devices:	146
Time interval:	2014-01-09 11:54:00

#### Most recent Historic values

Show OD Matrix

Show History



R-model

### REGULATORY

RoHS Compliant

CE, FCC certified



With our dedication to continuous development the specifications are subject to change. To verify the current information please visit [www.deepbluesensor.com](http://www.deepbluesensor.com)

Passionately designed by

**trafficnow®**