

# DeepBlue<sup>v2t</sup> Sensor



D-model

*Travel time, O/D matrices, incident detection, Online web based applications*

*Bluetooth, Wi-Fi, GPS, 3G, Dual-SIM, Ethernet, Multi-color LED, GPIO, RTC Battery, Non-volatile memory*

*Field proven, easy set-up and configuration, up to 12 lanes, side-fire, Wireless device detection, tracking*

*Cost effective, Low power, Self-diagnostics, Autonomous, Reliable and secure transmission*

ALL-IN-ONE  
TWO EXTERNAL | BLUETOOTH &  
ANTENNAS | V2t-PLATFORM

With our dedication to continuous development the specifications are subject to change. To verify the current information please visit [www.deepbluesensor.com](http://www.deepbluesensor.com)

Passionately designed by

**trafficnow®**

# DeepBlue<sup>v2t</sup> Sensor

## POWER SUPPLY

12 to 48 VDC

Min 2.20 W (configuration dependent)

PoE (Power over Ethernet)

## CPU & MEMORY

ARM 9 Processor

128 MB RAM / Flash

Micro SD storage

## COMMUNICATIONS

Ethernet

Optional 3G/CDMA Worldwide

Dual SIM-Card slot

Remote Sensor Access

Optional General Purpose IO

## OPERATIONS

Linux based OS

LED for operations diagnostics

## ENVIRONMENTAL

-35°C to +80°C

IP65 housing

Shock/vibration: NEMA TS2-2003

## DIMENSIONS & WEIGHT

H x W x L 337 mm x 413 mm x 150 mm

2.65 kg including stainless steel brackets

## BLUETOOTH

Dual channel operation

Two side-mounted antennas

110° horizontal angle; 30° vertical angle

Detects all standard Bluetooth® versions

More than 500 meters range

-104dB receive sensitivity

## WI-FI

Optional Wi-Fi detection

### Real Time Segment data

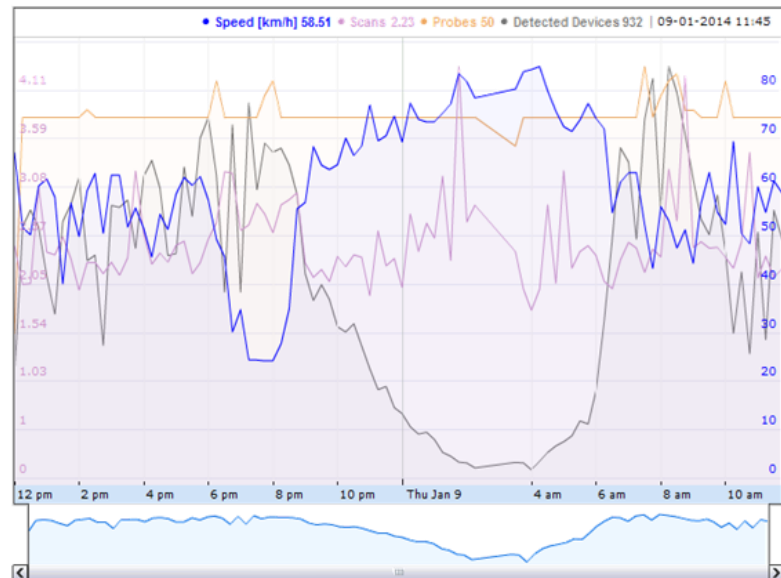
Click on a segment in order to display its information

Segment:	[8] Av. Nardisa de Jesús Sector Sauces->Puente Unidad Nacional (Puntilla-Guill)
Segment length:	6200 m
Heavy traffic if speed is below:	30.00 km/h
Free-flowing traffic if speed is above:	40.00 km/h
Average speed in segment:	49.29 km/h
Average travel time:	0 h 7 m 33 s
Sample Size:	10
Detected Devices:	146
Time interval:	2014-01-09 11:54:00

### Most recent Historic values

Show OD Matrix

Show History



D-model

## REGULATORY

RoHS Compliant

CE, FCC certified



With our dedication to continuous development the specifications are subject to change. To verify the current information please visit [www.deepbluesensor.com](http://www.deepbluesensor.com)

Passionately designed by

**trafficnow®**